

BELGRADE STEEL TANK

**330** SQ. FT.  
PULSE JET DUST COLLECTOR





330 Sq.Ft. Pulse Jet  
Dust Collector



DC-1030  
Filter Cartridge

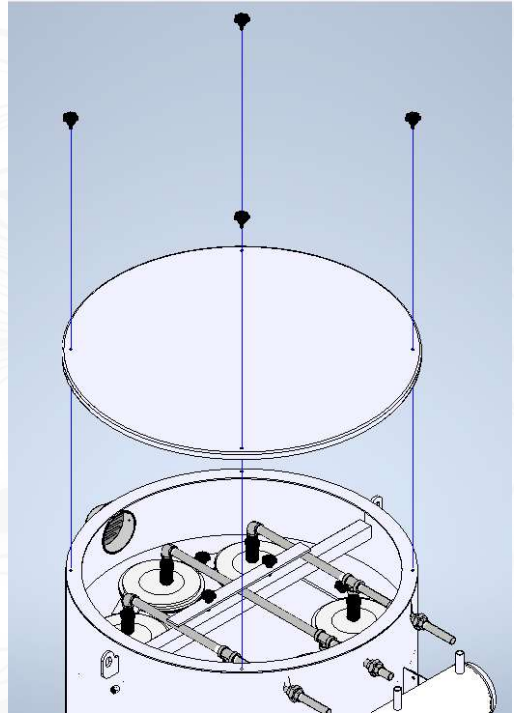
DUST COLLECTOR SPECIFICATIONS	
Total Filtration Area	330 Sq.Ft.
Air To Cloth Ratio (ACFM/SQ.')	4.8
Pressure Drop	6"
Air Capacity	1600
Outlet Area (SQ.')	.83
Cleaning Method	Pulse Jet
Inlet Dust Concentration at 15 GR.CU'	25,000
Outlet Emissions (GR./MIN.)	2.50
Outlet Dust Loading (GR./CU'	.0015
Air Consumption	8CFM
Solenoids	120/60 ASCO Power Pulse Valve (Qty:3)

FILTER CARTRIDGE SPECIFICATIONS	
Dimensions	11.09"OD x 5.75"ID x 30" Tall
Top End Cap	G60 Galvanized-Open with 11" Flange
Bottom End Cap	G60 Galvanized-Closed
Gasket	5/8" Height x 10"ID Neoprene
Outline Retainer	Retainer Bands
Inner Core	Galvanized Expanded Metal 72% Open
Filter Area	55 Square Feet
Fiber	100% Spun Bond Polyester
Material Weight	8oz / Square Yard
Permeability	24 CFM
Mullen Burst Dry	388 PSI
Temperature Limit	275 Degrees Fahrenheit
Efficiency	99.99%

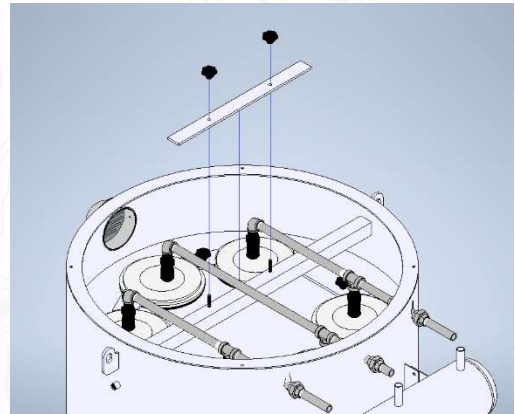
**OPERATION RECOMMENDATIONS:** Supply unit with 100PSI air pressure and 110 volt or 12 volt power. Turn on the dust collector when filling cycle begins. Operate dust collector for 20 minutes after filling cycle is complete.

# CARTRIDGE INSTALLATION

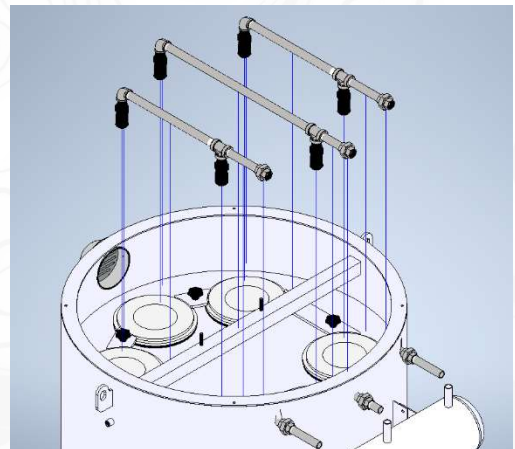
1.) Unscrew (4) male knobs and remove cover.



2.) Unscrew (2) female knobs and remove blower tube hold-down.

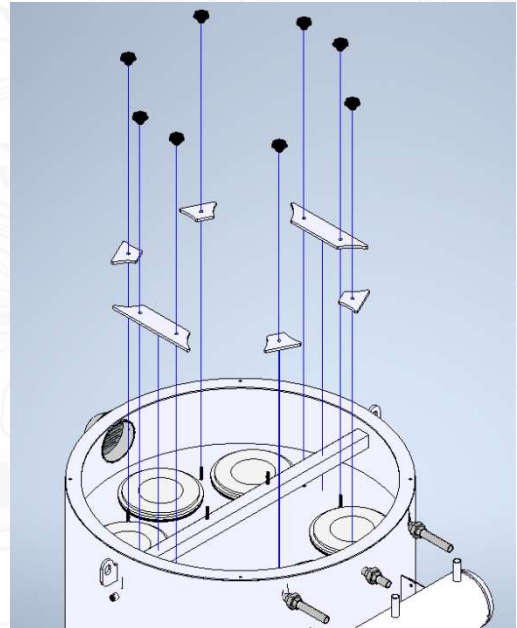


3.) Loosen the pipe unions and remove cartridge blower tubes.

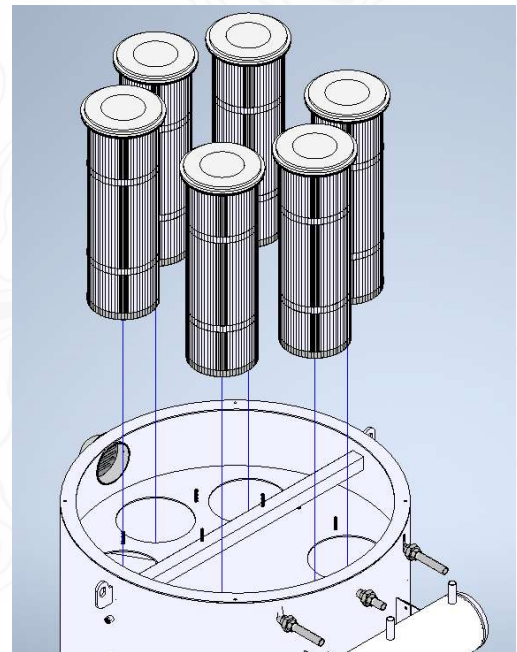




4.) Unscrew (8) female knobs and remove short and long cartridge hold down plates. (**NOTE:** When re-installing the plates do not overtighten.)



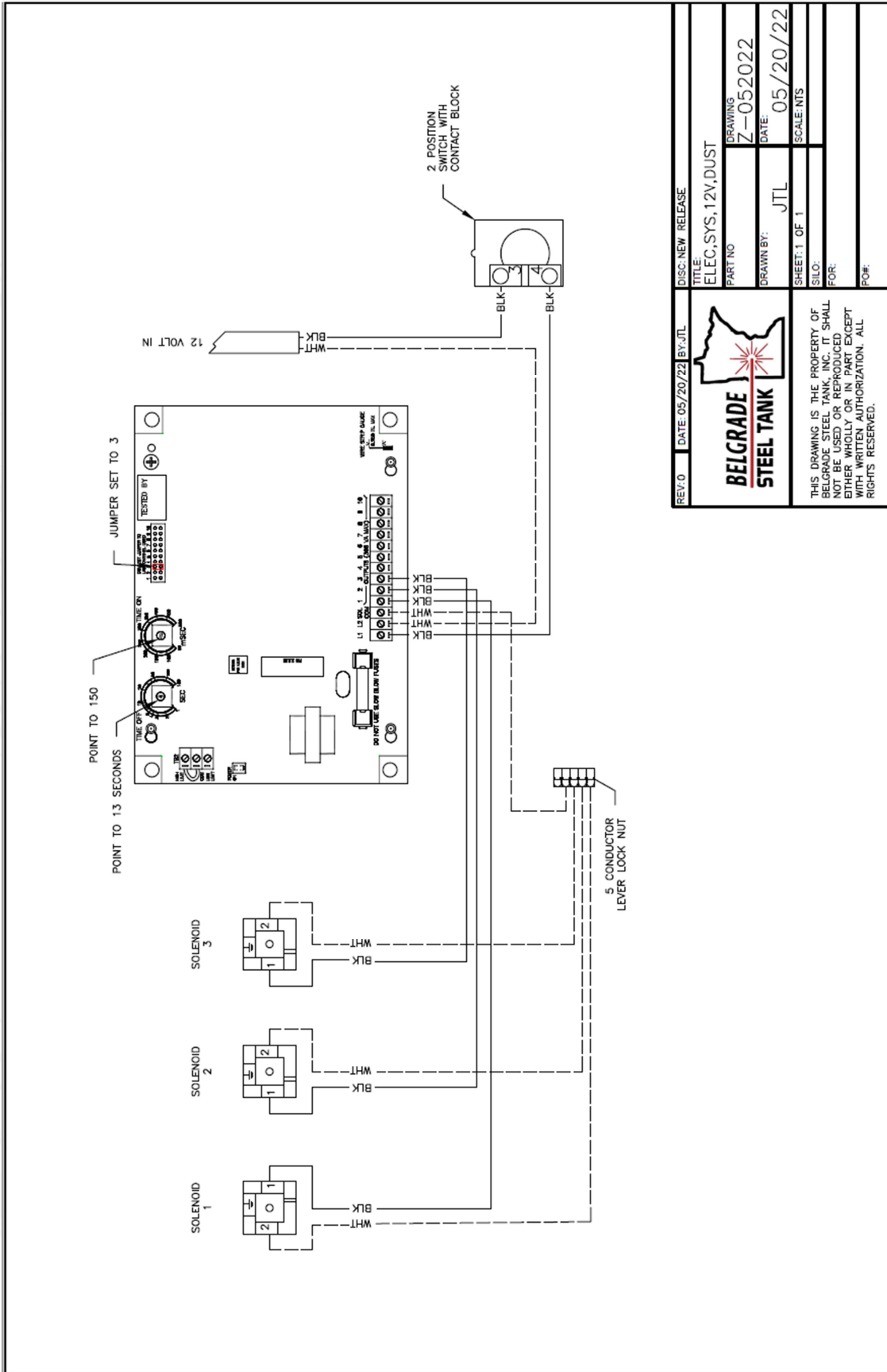
5.) Remove (6) DC-1030 filter cartridges. Reverse steps to complete installation. Make sure cartridges are centered in opening.




INSPECT CARTRIDGES MONTHLY AND REPLACE EVERY 6 TO 12 MONTHS. (DEPENDS ON USAGE AMOUNT AND PRODUCT MATERIAL.)



# 12 VOLT DIAGRAM



REV. 0	DATE: 05/20/22	BY: JTL	DISC: NEW RELEASE
<b>BELGRADE STEEL TANK</b>			
TITLE: ELEC, SYS, 12V, DUST		DRAWING: Z-052022	DATE: 05/20/22
PART NO:		DRAWN BY: JTL	SCALE: NTS
SHEET: 1 OF 1		FOR:	
SHEET: 1 OF 1		FOR:	
SHEET: 1 OF 1		FOR:	
SHEET: 1 OF 1		FOR:	
SHEET: 1 OF 1		FOR:	

THIS DRAWING IS THE PROPERTY OF BELGRADE STEEL TANK, INC. IT SHALL NOT BE USED OR REPRODUCED EITHER WHOLLY OR IN PART EXCEPT WITH WRITTEN AUTHORIZATION. ALL RIGHTS RESERVED.